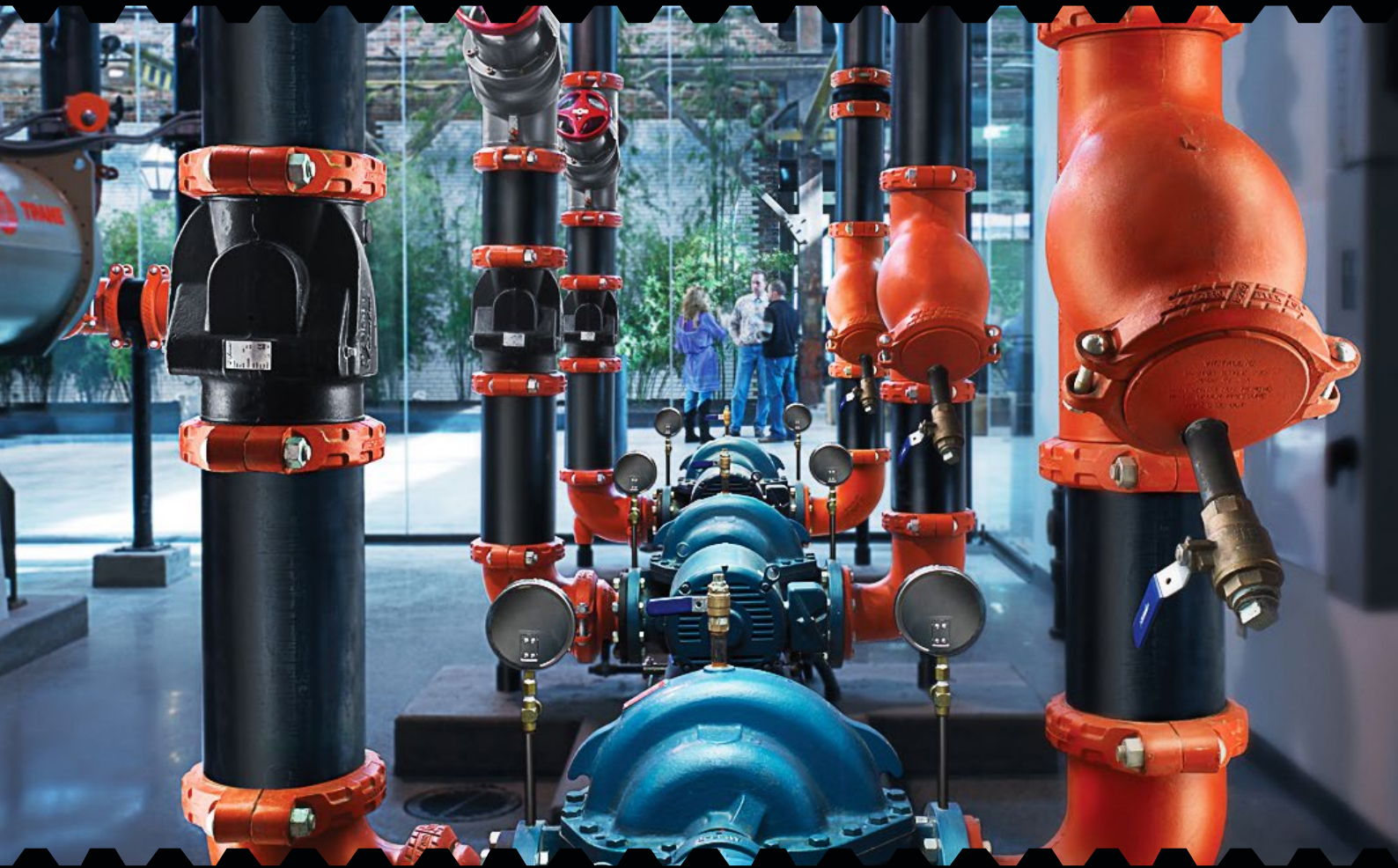


Victaulic - Mechanical Services









Keeping the art of distribution simple

Victaulic – Mechanical Services

The Victaulic grooved piping system is the most versatile economical, and reliable piping system available. It is up to 3 times faster to install than welding, easier and more reliable than threading or flanging, resulting in lower installed cost. The system is designed for roll grooved or cut grooved standard pipe or roll grooved lightweight pipe (all processed and quality checked at Shawston in-house tube processing facility).

With the introduction of Victaulic Installation Ready technology, the original groove system has evolved to a new level. Grooved couplings featuring this patented Victaulic technology install ten times faster than other pipe jointing methods.

Couplings	Page 4 - 8	
Flange Adapters	Page 9	
Mechanical Tees	Pages 10 - 11	
Fittings	Pages 12 - 19	
Expansion Joints, Strainers & Diffusers	Page 20	
Valves	Page 21 - 22	



Victaulic Roll Grooved Steel Tube

Our skilled team operate out of our 20,000 sq ft facility in Manchester. Every length of steel tube we sell can be cut, threaded and roll grooved in-house eliminating the need for any hot works or additional fabrication.

Since there are no “middle men” at Shawston we control the quality, cost and lead time, allowing us to be consistent on price and delivery, whilst also being agile to turn around large projects at short notice.

Working closely with Victaulic (mainly on Plant Rooms, Energy Centres and general distribution) Shawston can provide a full take off service. If your project has been drawn up with Victaulic, or you can provide drawings, we can offer:

- **Every groove is individually checked at the manufacturing stage using Victaulic equipment for accuracy and peace of mind.**
- **State-of-the-art Victaulic approved roll grooving machines.**
- **Weld test points to the pre-cut and grooved pipe.**
- **Cut length +/- 1mm.**
- **All Shawston 15nb to 150nb tube is dual certified to EN10255/10217.**
- **Manufacture low loss headers.**
- **Manufacture grooved or flanged spool pieces making connections to plant quick and easy.**
- **A “bag and tag” service. All pipe, Victaulic fittings and couplings are delivered to site clearly labelled with marked up drawings. (Each length of pipe is individually marked up and referenced to the relevant drawing.)**



Couplings

**Zero-Flex Rigid Couplings,
Style 07
- Orange**



**Zero-Flex Rigid Couplings,
Style 07
- Galvanised**



**QuickVic Rigid Couplings,
Style 107N
- Orange**



CODE	Size (mm)
V07R025	25
V07R032	32
V07R040	40
V07R050	50
V07R065	65
V07R080	80
V07R100	100
V07R125	125
V07R150	150
V07R168	150 (168.3)
V07R200	200
V07R250	250
V07R300	300

- **Sizes from DN25 - DN300/1 - 12"**
- **Pressures up to 750psi/5171kPa/52bar**

CODE	Size (mm)
V07G025	25
V07G032	32
V07G040	40
V07G050	50
V07G065	65
V07G080	80
V07G100	100
V07G125	125
V07G150	150
V07G168	150 (168.3)
V07G200	200
V07G250	250
V07G300	300

- **Sizes from DN25 - DN300/1 - 12"**
- **Pressures up to 750psi/5171kPa/52bar**

CODE	Size (mm)
V107R050	50
V107R065	65
V107R080	80
V107R100	100
V107R125	125
V107R150	150
V107R168	150 (168.3)
V107R200	200

- **Sizes from DN50 - DN300/2 - 12"**
- **Pressures up to 750psi/5171kPa/52bar**

Couplings

QuickVic Rigid Couplings, Style 107N - Galvanised



QuickVic Flexible Couplings, Style 177 - Orange



QuickVic Flexible Couplings, Style 177 - Galvanised



CODE	Size (mm)
V107G050	50
V107G065	65
V107G080	80
V107G100	100
V107G125	125
V107G150	150
V107G168	150 (168.3)
V107G200	200

- Sizes from DN50 - DN300/2 - 12"
- Pressures up to 750psi/5171kPa/52bar

CODE	Size (mm)
V177R050	50
V177R065	65
V177R080	80
V177R100	100
V177R125	125
V177R150	150
V177R200	200

- Sizes from DN50 - DN200/2 - 8"
- Pressures up to 1000psi/6895kPa/69bar

CODE	Size (mm)
V177G050	50
V177G065	65
V177G080	80
V177G100	100
V177G125	125
V177G150	150
V177G200	200

- Sizes from DN50 - DN200/2 - 8"
- Pressures up to 1000psi/6895kPa/69bar

Couplings

Flexible Couplings, Style 75 - Orange



Flexible Couplings, Style 75 - Galvanised



Std Flexible Couplings, Style 77 - Orange



CODE	Size (mm)
V75R025	25
V75R032	32
V75R040	40
V75R050	50
V75R065	65
V75R080	80
V75R100	100
V75R125	125
V75R150	150
V76R168	150 (168.3)
V75R200	200

- Sizes from DN25 - DN200/1 - 8"
- Pressures up to 500psi/3447kPa/34bar

CODE	Size (mm)
V75G025	25
V75G032	32
V75G040	40
V75G050	50
V75G065	65
V75G080	80
V75G100	100
V75G125	125
V75G150	150
V75G168	150 (168.3)
V75G200	200

- Sizes from DN25 - DN200/1 - 8"
- Pressures up to 500psi/3447kPa/34bar

CODE	Size (mm)
V77R020	20
V77R025	25
V77R032	32
V77R040	40
V77R050	50
V77R065	65
V77R080	80
V77R100	100
V77R125	125
V77R150	150
V77R168	150 (168.3)
V77R200	200
V77R250	250
V77R300	300

- Sizes from DN20 - DN600/3/4 - 24"
- Pressures up to 1000psi/6895kPa/69bar

Couplings

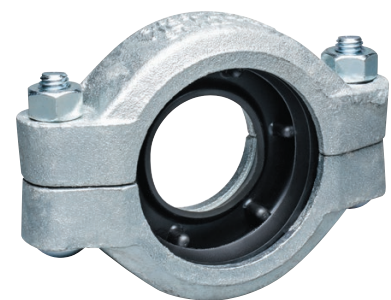
Std Flexible Couplings, Style 77 - Galvanised



Reducing Couplings, Style 750 - Red



Reducing Couplings, Style 750 - Galvanised



CODE	Size (mm)
V77G020	20
V77G025	25
V77G032	32
V77G040	40
V77G050	50
V77G065	65
V77G080	80
V77G100	100
V77G125	125
V77G150	150
V77G168	150 (168.3)
V77G200	200
V77G250	250
V77G300	300

- Sizes from DN20 - DN600/¾ - 24"
- Pressures up to 1000psi/6895kPa/69bar

CODE	Size (mm)
V750R050X025	50 x 25
V750R050X040	50 x 40
V750R065X050	65 x 50
V750R080X050	80 x 50
V750R080X065	80 x 65
V750R100X050	100 x 50
V750R100X065	100 x 65
V750R100X080	100 x 80
V750R150X100	150 x 100
V750R200X150	200 x 150

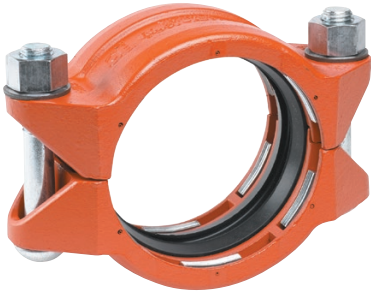
- Sizes from DN50 - DN250/2 - 10"
- Pressures up to 500psi/3447kPa/34bar

CODE	Size (mm)
V750G050X025	50 x 25
V750G050X040	50 x 40
V750G065X050	65 x 50
V750G080X050	80 x 50
V750G080X065	80 x 65
V750G100X050	100 x 50
V750G100X065	100 x 65
V750G100X080	100 x 80
V750G150X100	150 x 100
V750G200X150	200 x 150

- Sizes from DN50 - DN250/2 - 10"
- Pressures up to 500psi/3447kPa/34bar

Couplings

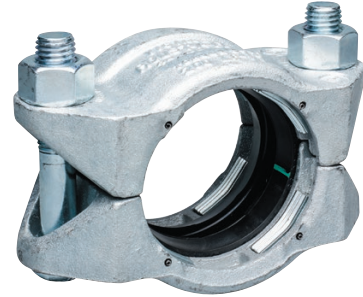
Roust-A-Bout Couplings, Style 99 - Orange/Red



CODE	Size (mm)
V99R040	40
V99R050	50
V99R065	65
V99R080	80
V99R100	100
V99R125	125
V99R150	150 (165)
V99R200	200
V99R250	250

- Sizes from DN25 - DN450/1 - 18"
- Pressures up to 750psi/5171kPa/52bar

Roust-A-Bout Couplings, Style 99 - Galvanised



CODE	Size (mm)
V99G040	40
V99G050	50
V99G065	65
V99G080	80
V99G100	100
V99G125	125
V99G150	150 (165)
V99G200	200
V99R250	250

- Sizes from DN25 - DN450/1 - 18"
- Pressures up to 750psi/5171kPa/52bar

Flange Adapters

Flange Adapters PN10/16, Style 741 - Black



Flange Adapters PN10/16, Style 741 - Galvanised



CODE	Size (mm)
V741R050	50
V741R065	65
V741R080	80
V741R100	100
V741R125	125
V741R150	150
V741R168	150 (168.3)
V741R200	200
V741R250	250
V741R300	300

CODE	Size (mm)
V741G050	50
V741G065	65
V741G080	80
V741G100	100
V741G125	125
V741G150	150
V741G168	150 (168.3)
V741G200	200
V741G250	250
V741G300	300

- Sizes from DN50 - DN600/2 - 24"
- Pressures up to 300psi/2068kPa/21bar

- Sizes from DN50 - DN600/2 - 24"
- Pressures up to 300psi/2068kPa/21bar

Mechanical Tees

Mechanical Tees BSPT, Style 920/920N - Red/Orange



CODE	Size (mm)
V920R050X025	50 x 25
V920R050X032	50 x 32
V920R050X040	50 x 40
V920R065X025	65 x 25
V920R065X032	65 x 32
V920R065X040	65 x 40
V920R080X025	80 x 25
V920R080X032	80 x 32
V920R080X040	80 x 40
V920R080X050	80 x 50
V920R100X025	100 x 25
V920R100X032	100 x 32
V920R100X040	100 x 40
V920R100X050	100 x 50
V920R100X065	100 x 65
V920R100X080	100 x 80
V920R125X040	125 x 40
V920R125X050	125 x 50

CODE	Size (mm)
V920R125X065	125 x 65
V920R150X032	150 x 32
V920R150X040	150 x 40
V920R150X050	150 x 50
V920R150X065	150 x 65
V920R150X080	150 x 80
V920R150X100	150 x 100
V920R200X050	200 x 50
V920R200X065	200 x 65

- Sizes from DN50 - DN200/2 - 8"
- Pressures up to 500psi/3447kPa/34bar

Mechanical Tees Grvd, Style 920/920N - Red/Orange



CODE	Size (mm)
V920RG050X032	50 x 32
V920RG050X040	50 x 40
V920RG065X032	65 x 32
V920RG065X040	65 x 40
V920RG080X032	80 x 32
V920RG080X040	80 x 40
V920RG080X050	80 x 50
V920RG100X032	100 x 32
V920RG100X040	100 x 40
V920RG100X050	100 x 50
V920RG100X065	100 x 65
V920RG100X080	100 x 80
V920RG125X040	125 x 40
V920RG125X050	125 x 50
V920RG125X080	125 x 80
V920RG150X050	150 x 50
V920RG150X065	150 x 65
V920RG150X080	150 x 80
V920RG150X100	150 x 100
V920RG200X050	200 x 50
V920RG200X065	200 x 65
V920RG200X080	200 x 80
V920RG200X100	200 x 100

- Sizes from DN50 - DN200/2 - 8"
- Pressures up to 500psi/3447kPa/34bar

Mechanical Tees

Mechanical Tees BSPT, Style 920/920N - Galvanised



Mechanical Tees Grvd, Style 920/920N - Galvanised



CODE	Size (mm)
V920G050X032	50 x 32
V920G050X040	50 x 40
V920G065X025	65 x 25
V920G065X032	65 x 32
V920G065X040	65 x 40
V920G080X025	80 x 25
V920G080X032	80 x 32
V920G080X040	80 x 40
V920G080X050	80 x 50
V920G100X025	100 x 25
V920G100X032	100 x 32
V920G100X040	100 x 40
V920G100X050	100 x 50
V920G100X065	100 x 65
V920G100X080	100 x 80
V920G125X050	125 x 50
V920G125X080	125 x 80
V920G150X032	150 x 32

CODE	Size (mm)
V920G150X040	150 x 40
V920G150X050	150 x 50
V920G150X065	150 x 65
V920G150X080	150 x 80
V920G150X100	150 x 100
V920G200X050	200 x 50
V920G200X065	200 x 65
V920G200X080	200 x 80
V920G200X100	200 x 100

CODE	Size (mm)
V920GG050X032	50 x 32
V920GG050X040	50 x 40
V920GG065X032	65 x 32
V920GG065X040	65 x 40
V920GG080X032	80 x 32
V920GG080X040	80 x 40
V920GG080X050	80 x 50
V920GG100X032	100 x 32
V920GG100X040	100 x 40
V920GG100X050	100 x 50
V920GG100X065	100 x 65
V920GG100X080	100 x 80
V920GG125X050	125 x 50
V920GG125X065	125 x 65
V920GG125X080	125 x 80
V920GG150X050	150 x 50
V920GG150X065	150 x 65
V920GG150X080	150 x 80
V920GG150X100	150 x 100
V920GG200X050	200 x 50
V920GG200X065	200 x 65
V920GG200X080	200 x 80
V920GG200X100	200 x 100

- Sizes from DN50 - DN200/2 - 8"
- Pressures up to 500psi/3447kPa/34bar

- Sizes from DN50 - DN200/2 - 8"
- Pressures up to 500psi/3447kPa/34bar

Fittings

No. 10 90° Elbows - Red/Orange



CODE	Size (mm)
VE90R020	20
VE90R025	25
VE90R032	32
VE90R040	40
VE90R050	50
VE90R065	65
VE90R080	80
VE90R100	100
VE90R125	125
VE90R150	150
VE90R168	168
VE90R200	200
VE90R250	250
VE90R300	300

- Sizes from DN20 - DN600/¾ - 24"
- Standard fitting pressure rating as rating of installed coupling

No. 10 90° Elbows - Galvanised



CODE	Size (mm)
VE90G020	20
VE90G025	25
VE90G032	32
VE90G040	40
VE90G050	50
VE90G065	65
VE90G080	80
VE90G100	100
VE90G125	125
VE90G150	150
VE90G168	150 (168.3)
VE90G200	200
VE90G250	250
VE90G300	300

- Sizes from DN20 - DN600/¾ - 24"
- Standard fitting pressure rating as rating of installed coupling

No. 11 45° Elbows - Orange



CODE	Size (mm)
VE45R020	20
VE45R025	25
VE45R032	32
VE45R040	40
VE45R050	50
VE45R065	65
VE45R080	80
VE45R100	100
VE45R125	125
VE45R150	150
VE45R168	150 (168.3)
VE45R200	200
VE45R250	250
VE45R300	300

- Sizes from DN20 - DN600/¾ - 24"
- Standard fitting pressure rating as rating of installed coupling

Fittings

No. 11 45° Elbows - Galvanised



CODE	Size (mm)
VE45G020	20
VE45G025	25
VE45G032	32
VE45G040	40
VE45G050	50
VE45G065	65
VE45G080	80
VE45G100	100
VE45G125	125
VE45G150	150
VE45G168	150 (168.3)
VE45G200	200
VE45G250	250
VE45G300	300

- Sizes from DN20 - DN600/¾ - 24"
- Standard fitting pressure rating as rating of installed coupling

No. 12 22 ½° Elbows - Orange



CODE	Size (mm)
VE22R050	50
VE22R065	65
VE22R080	80
VE22R100	100
VE22R125	125
VE22R150	150
VE22R200	200

- Sizes from DN20 - DN600/¾ - 24"
- Standard fitting pressure rating as rating of installed coupling

No. 12 22 ½° Elbows - Galvanised



CODE	Size (mm)
VE22G050	50
VE22G065	65
VE22G080	80
VE22G100	100
VE22G125	125
VE22G150	150 (168.3)
VE22G200	200

- Sizes from DN20 - DN600/¾ - 24"
- Standard fitting pressure rating as rating of installed coupling

Fittings

No. 13 11 ¼° Elbows - Orange



CODE	Size (mm)
VE11R050	50
VE11R065	65
VE11R080	80
VE11R100	100
VE11R125	125
VE11R150	150 (165.1)
VE11R200	200

- Sizes from DN20 - DN600/¾ - 24"
- Standard fitting pressure rating as rating of installed coupling

No. 13 11 ¼° Elbows - Galvanised



CODE	Size (mm)
VE11G050	50
VE11G065	65
VE11G080	80
VE11G100	100
VE11G125	125
VE11G150	150 (165.1)
VE11G200	200

- Sizes from DN20 - DN600/¾ - 24"
- Standard fitting pressure rating as rating of installed coupling

No. 20 Tees - Orange



CODE	Size (mm)
VTR020	20
VTR025	25
VTR032	32
VTR040	40
VTR050	50
VTR065	65
VTR080	80
VTR100	100
VTR125	125
VTR150	150
VTR200	200
VTR250	250
VTR300	300

- Sizes from DN20 - DN600/¾ - 24"
- Standard fitting pressure ratings as rating of installed coupling

Fittings

No. 20 Tees - Galvanised



No. 25 Reducing Tees - Orange



No. 25 Reducing Tees - Galvanised



CODE	Size (mm)
VTG020	20
VTG025	25
VTG032	32
VTG040	40
VTG050	50
VTG065	65
VTG080	80
VTG100	100
VTG125	125
VTG150	150
VTG200	200
VTG250	250
VTG300	300

- Sizes from DN20 - DN600^{3/4} - 24"
- Standard fitting pressure ratings as rating of installed coupling

CODE	Size (mm)
VTR065X050	65 x 65 x 50
VTR080X050	80 x 80 x 50
VTR080X065	80 x 80 x 65
VTR100X050	100 x 100 x 50
VTR100X065	100 x 100 x 65
VTR100X080	100 x 100 x 80
VTR125X065	125 x 125 x 65
VTR125X080	125 x 125 x 80
VTR125X100	125 x 125 x 100
VTR150X050	150 x 150 x 50
VTR150X065	150 x 150 x 65
VTR150X080	150 x 150 x 80
VTR150X100	150 x 150 x 100
VTR150X125	150 x 150 x 125
VTR200X065	200 x 200 x 65
VTR200X080	200 x 200 x 80
VTR200X100	200 x 200 x 100
VTR200x125	200 x 200 x 125
VTR200X150	200 x 200 x 150

- Sizes from DN20 - DN600^{3/4} - 24"
- Standard fitting pressure ratings as rating of installed coupling

CODE	Size (mm)
VTG065X050	65 x 65 x 50
VTG080X050	80 x 80 x 50
VTG080X065	80 x 80 x 65
VTG100X050	100 x 100 x 50
VTG100X065	100 x 100 x 65
VTG100X080	100 x 100 x 80
VTG125X065	125 x 125 x 65
VTG125X080	125 x 125 x 80
VTG125X100	125 x 125 x 100
VTG150X050	150 x 150 x 50
VTG150X065	150 x 150 x 65
VTG150X080	150 x 150 x 80
VTG150X100	150 x 150 x 100
VTG200X065	200 x 200 x 65
VTG200X080	200 x 200 x 80
VTG200X100	200 x 200 x 100
VTG200X150	200 x 200 x 150

- Sizes from DN20 - DN600^{3/4} - 24"
- Standard fitting pressure ratings as rating of installed coupling

Fittings

No. 29T Threaded Reducing Tees - Orange



CODE	Size (mm)
V29TR050X050X025	50 x 50 x 25
V29TR050X050X040	50 x 50 x 40
V29TR080X080X020	80 x 80 x 20
V29TR080X080X025	80 x 80 x 25
V29TR080X080X032	80 x 80 x 32
V29TR080X080X050	80 x 80 x 50
V29TR100X100X032	100 x 100 x 32
V29TR100x100x040	100 x 100 x 40
V29TR100X100X080	100 x 100 x 80

- **Sizes from DN20 - DN600^{3/4} - 24"**
- **Standard fitting pressure ratings as rating of installed coupling**

No. 29T Threaded Reducing Tees - Galvanised



CODE	Size (mm)
V29TG050X050X020	50 x 50 x 20
V29TG050X050X025	50 x 50 x 25
V29TG050X050X032	50 x 50 x 32
V29TG050X050X040	50 x 50 x 40
V29TG080X080X025	80 x 80 x 25
V29TG080X080X040	80 x 80 x 40
V29TG080X080X050	80 x 80 x 50
V29TG100X100X025	100 x 100 x 25
V29TG100x100x032	100 x 100 x 32
V29TG100X100X040	100 x 100 x 40
V29TG100X100X050	100 x 100 x 50

- **Sizes from DN20 - DN600^{3/4} - 24"**
- **Standard fitting pressure ratings as rating of installed coupling**

No. 50 Concentric Reducers - Red/Orange



CODE	Size (mm)
VCONR050X040	50 x 40
VCONR065X050	65 x 50
VCONR080X050	80 x 50
VCONR080X065	80 x 65
VCONR100X050	100 x 50
VCONR100X065	100 x 65
VCONR100X080	100 x 80
VCONR125X080	125 x 80
VCONR125X100	125 x 100
VCONR150X050	150 x 50
VCONR150X065	150 x 65
VCONR150X080	150 x 80
VCONR150X100	150 x 100 (165 x 114)
VCONR165X125	150 x 125
VCONR200X100	200 x 100
VCONR200X125	200 x 125
VCONR200X150	200 x 150
VCONR300X200	300 x 200

- **Sizes from DN20 - DN600^{3/4} - 24"**
- **Standard fitting pressure ratings as rating of installed coupling**

Fittings

No. 50 Concentric Reducers - Galvanised



No. 51 Eccentric Reducers - Red/Orange



CODE	Size (mm)
VCONG050X040	50 x 40
VCONG065X050	65 x 50
VCONG080X050	80 x 50
VCONG080X065	80 x 65
VCONG100X050	100 x 50
VCONG100X065	100 x 65
VCONG100X080	100 x 80
VCONG125X080	125 x 80
VCONG125X100	125 x 100
VCONG150X050	150 x 50
VCONG150X065	150 x 65
VCONG150X080	150 x 80
VCONG150X100	150 x 100
VCONG165X125	150 x 125
VCONG200X100	200 x 100
VCONG200X125	200 x 125
VCONG200X150	250 x 150

- Sizes from DN20 - DN600³/₄ - 24"
- Standard fitting pressure ratings as rating of installed coupling

CODE	Size (mm)
VECCR040X025	40 x 25
VECCR040X032	40 x 32
VECCR050X020	50 x 20
VECCR050X025	50 x 25
VECCR050X032	50 x 32
VECCR050X040	50 x 40
VECCR065X040	65 x 40
VECCR065X050	65 x 50
VECCR080X025	80 x 25
VECCR080X032	80 x 32
VECCR080X040	80 x 40
VECCR080X050	80 x 50
VECCR080X065	80 x 65
VECCR100X025	100 x 25
VECCR100X040	100 x 40
VECCR100X050	100 x 50
VECCR100X065	100 x 65

- Sizes from DN20 - DN600³/₄ - 24"
- Standard fitting pressure ratings as rating of installed coupling

CODE	Size (mm)
VECCR100X080	100 x 80
VECCR125X080	125 x 80
VECCR125X100	125 x 100
VECCR150X065	150 x 65
VECCR150X080	150 x 80
VECCR150X100	150 x 100
VECCR150X125	150 x 125
VECCR200X080	200 x 80
VECCR200X100	200 x 100
VECCR200X150	200 x 150

Fittings

No. 51 Eccentric Reducers - Galvanised



CODE	Size (mm)
VECCG050X025	50 x 25
VECCG050X032	50 x 32
VECCG050X040	50 x 40
VECCG065X050	65 x 50
VECCG080X025	80 x 25
VECCG080X040	80 x 40
VECCG080X050	80 x 50
VECCG080X065	80 x 65
VECCG100X040	100 x 40
VECCG100X050	100 x 50
VECCG100X065	100 x 65
VECCG100X080	100 x 80
VECCG125X080	125 X 80
VECCG125X100	125 x 100
VECCG150X100	150 x 100
VECCG150X125	165 x 125
VECCG200X080	200 x 80
VECCG200X100	200 x 100
VECCG200X150	200 x 150

- **Sizes from DN20 - DN600³/₄ - 24"**
- **Standard fitting pressure ratings as rating of installed coupling**

No. 60 Caps - Red



CODE	Size (mm)
VBER025	25
VBER032	32
VBER040	40
VBER050	50
VBER065	65
VBER080	80
VBER100	100
VBER125	125
VBER150	150
VBER200	200
VBER250	250
VBER300	300

- **Sizes from DN20 - DN600³/₄ - 24"**
- **Standard fitting pressure rating as rating of installed coupling**

No. 60 Caps - Galvanised



CODE	Size (mm)
VBEG025	25
VBEG032	32
VBEG040	40
VBEG050	50
VBEG065	65
VBEG080	80
VBEG100	100
VBEG125	125
VBEG150	150
VBEG200	200
VBEG250	250
VBEG300	300

- **Sizes from DN20 - DN600³/₄ - 24"**
- **Standard fitting pressure rating as rating of installed coupling**

Fittings

No. 60 Caps, Tapped BSPT - Red



No. 60 Caps, Tapped BSPT - Galvanised



No. 40 Adapter Nipples Grvd x Thd Male BSPT - Unpainted



CODE	Size (mm)
VBETR050X025	50 x 25
VBETR065X025	65 x 25
VBETR065X032	65 x 32
VBETR065X040	65 x 40
VBETR080X032	80 x 32
VBETR080X040	80 x 40
VBETR080X050	80 x 50
VBETR100X032	100 x 32
VBETR100X040	100 x 40
VBETR100X050	100 x 50
VBETR125x050	125 x 50
VBETR150X032	150 x 32
VBETR150X040	150 x 40
VBETR150X050	150 x 50
VBETR200X032	200 x 32
VBETR200X040	200 x 40
VBETR200X050	200 x 50

- Sizes from DN50 - DN200/2 - 8"
- Standard fitting pressure rating as rating of installed coupling

CODE	Size (mm)
VBETG050X032	50 x 32
VBETG050X040	50 x 40
VBETG065X032	65 x 32
VBETG065X040	65 x 40
VBETG065X050	65 x 50
VBETG080X032	80 x 32
VBETG080X040	80 x 40
VBETG080X050	80 x 50
VBETG080X065	80 x 65
VBETG100X032	100 x 32
VBETG100X040	100 x 40
VBETG100X050	100 x 50
VBETG100X065	100 x 65
VBETG100X080	100 x 80
VBETG150X032	150 x 32
VBETG150X040	150 x 40
VBETG150X050	150 x 50
VBETG200X032	200 x 32
VBETG200X040	200 x 40
VBETG200X050	200 x 50

- Sizes from DN50 - DN200/2 - 8"
- Standard fitting pressure rating as rating of installed coupling

CODE	Size (mm)
VNIP040	40 x 101.6
VNIP050	50 x 101.6
VNIP065	65 x 102
VNIP080	80 x 101.6
VNIP100	100 x 152.4
VNIP150	150 (165.1)

- Sizes from DN20 - DN600/3/4 - 24"
- Standard fitting pressure rating as rating of installed coupling

Victaulic Lubricant



CODE	Size
VLUB125	125 GR.
VLUB907	907 GR.

Expansion Joints, Strainers & Diffusers

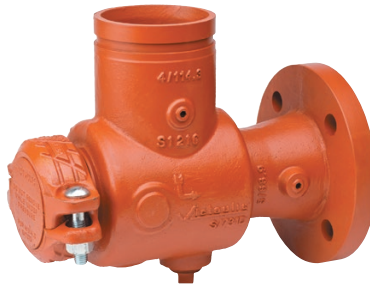
Mover Expansion Joints - Style 150



CODE	Size (mm)
V15050	50
V15065	65
V15080	80
V150100	100
V150125	125
V150150	150

- Sizes from DN50 - DN150/2 - 6"
- Pressures rated to the working pressure of coupling used

Suction Diffusers - Series 731-D



CODE	Size (mm)
V73165x50	65 x 50
V73180x50	80 x 50
V73180x65	80 x 65
V73180x80	80 x 80
V731100x100	100 x 100
v731100x50	100 x 50
V731100x65	100 x 65
V731100x80	100 x 80
V731125x100	125 x 100
V731125x125	125 x 125
V731125x65	125 x 65
V731125x80	125 x 80
V731150x100	150 x 100
V731150x125	150 x 125
V731150x150	150 x 150
V731200x125	200 x 125
V731200x200	200 x 200
V731250x150	273 x 168
V731300x200	300 x 200
V731300x250	300 x 250
V731300x300	300 x 300

- Sizes from DN65 - DN300/2½ - 12"
- Pressures up to 300psi/2068kPa/21 bar

Strainer Wye Type - Series 732



CODE	Size (mm)
V73265	65
V73280	80
V732100	100
V732125	125
V732150	150
V732200	200
V732250	250
V732300	300

- Sizes from DN50 - DN300/2 - 12"
- Pressures up to 300psi/2068kPa/21 bar

Valves

300 Masterseal Butterfly Valves - Series 761



CODE	Size (mm)
V30050GEAR	50
V30050LEVER	50
V30065GEAR	65
V30065LEVER	65
V30080GEAR	80
V30080LEVER	80
V300100GEAR	100
V300100LEVER	100
V300125GEAR	125
V300125LEVER	125
V300150GEAR	150
V300150LEVER	150
V300200GEAR	200
V300200LEVER	200
V300250GEAR	250
V300250LEVER	250

- Sizes from DN50 - DN300/2 - 12"
- Pressures up to 300psi/2068kPa/21 bar
- Designed for bi-directional, dead end services to full working pressure
- Available without handle, with gear operator, with lever lock handle and memory stop or with 10-position handle and memory stop

Check Valves - Series 716



CODE	Size (mm)
V71665	65
V71680	80
V716100	100
V716125	125
V716150	150

- Sizes from DN100 - DN300/4 - 12"
- Pressures up to 300psi/2068kPa/21 bar
- Features an elastomer encapsulated disc

Ball Valves - Series 726



CODE	Size (mm)
V726040	40
V726050	50
V726065	65
V726080	80
V726100	100

- Sizes from DN40 - DN150/1½ - 6"
- Pressures up to 1000psi/6895kPa/69 bar
- High pressure standard port ball valve with grooved ends
- Available without handle, with a lever or gear operator

Valves

Oventrop Double Reg & Commissioning Valves - Series 7890



CODE	Size (mm)
V789065	65
V789080	80
V7890100	100
V7890125	125
V7890150	150
V7890200	200
V7890250	250
V7890300	300

- Sizes from DN65 - DN300/2½ - 12"
- Pressures PN16 up to 150°C & PN20 on cold water services
- Valve performs presetting, measuring, isolating, filling and draining system functions
- Preset memory position to achieve system balance

Groove End Metering Stations - Series 7340



CODE	Size (mm)
V734065	65
V734080	80
V7340100	100
V7340125	125
V7340150	150
V7340200	200
V7340250	250
V7340300	300

- Sizes from DN65 - DN300/2½ - 12"
- Pressures limited to valve ratings
- Accurate, economical method for obtaining flow measurements
- Maintenance free design

LONGSTANDING

CHOICE

RELIABILITY

TEAMWORK

PASSION

NATIONAL

INNOVATIVE

UNMATCHED

www.shawston.co.uk

Shawston London
Units G & H,
Hillbottom Road,
Sands Industrial Estate,
High Wycombe,
Bucks HP12 4HS

Tel: 01494 460 910
Fax: 01494 522 573
Email: London@shawston.co.uk

Shawston Birmingham
Bay 1, Block D,
The Bescot Estate,
Woden Road West, Wednesbury
West Midlands WS10 7SG

Tel: 0121 556 3400
Fax: 0121 506 4669
Email: Birmingham@shawston.co.uk

Shawston Manchester
Great Norbury Street,
Hyde,
Cheshire SK14 1BW

Tel: 0161 368 4545
Fax: 0161 367 8114
Email: Manchester@shawston.co.uk

Shawston Glasgow
Block 1 Unit 4,
Annick Industrial Estate,
31 Sandilands Street,
Shettleston,
Glasgow G32 OHT

Tel: 0141 778 6975
Fax: 0141 778 6264
Email: Glasgow@shawston.co.uk
